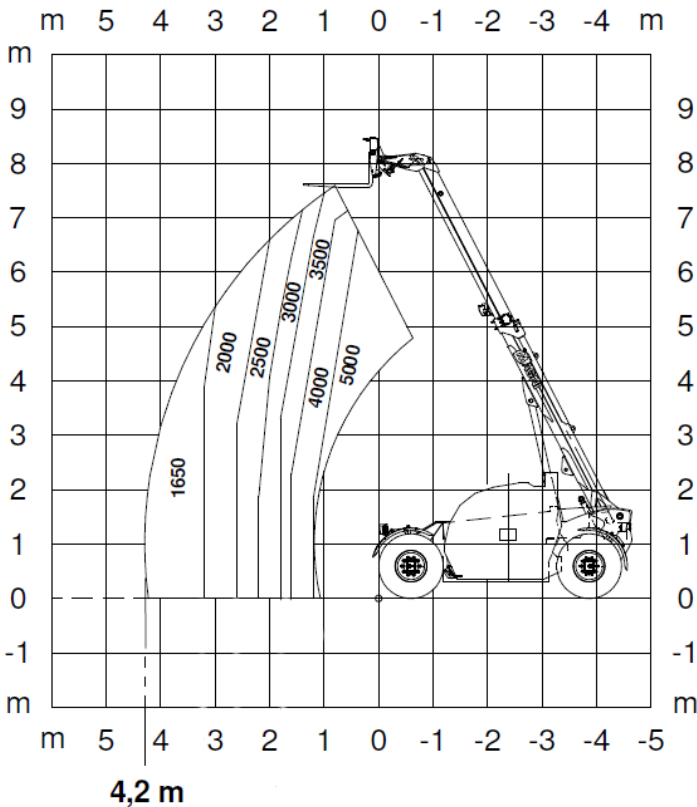
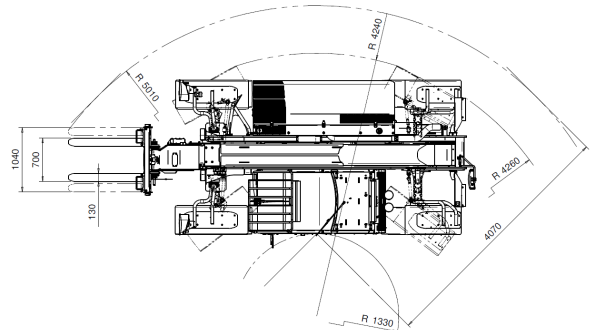
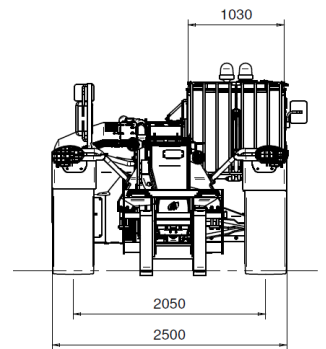
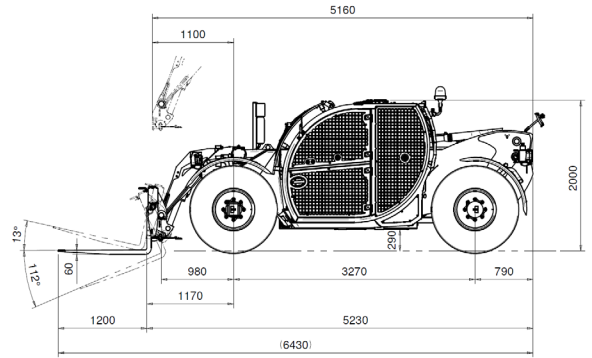


TH5.8

UNDERGROUND
PRELIMINARY



LOAD CHART WITH FORKS

TH5.8

UNDERGROUND
P R E L I M I N A R Y

MACHINE MODEL	Telescopic handler	TH 5.8 UNDERGROUND		
	Maximum lifting capacity	5,000 kg (center of gravity 600 mm)		
	Maximum lifting height	7.60 m		
	Maximum machine height	2.00 m		
ENGINE	Type	Deutz TCD 3,6 L4 Stage V	Deutz TCD 3,6 L4 Stage IV - Tier 4f	Deutz TCD 3,6 L4 EDG Stage IIIA
	Rated power	74,4 kW (97,7 hp) @ 2,200 rpm		
	Maximum torque	410 Nm @ 1,600 rpm		
	Displacement	3,6 l		
	Cylinders	4 in line		
	Engine configuration	Diesel direct injection turbocharged		
	Cooling system	Water – intercooler		
TRANSMISSION	Type	Hydrostatic		
	Model	Bosch Rexroth		
	Maximum pressure	470 bar		
	Displacements	Electronically controlled variable displacement pump Variable displacement motor		
	Gear box	Dropbox, 2 speeds		
AXLES AND BRAKES	Axle type	Axles with planetary gearboxes		
	Rear axle	Oscillating and steering with hydraulic locking +/- 7°		
	Front axle	LS dynamic power steering		
	Brake type	Mining fail-safe braking system		
	Service brake	Hydraulic multi-disk power brake		
	Service brake type	Dual acting master cylinder with independent lines to multi-disk brakes in oil bath on front & rear axles.		
	Service brake control	Foot-operated for front & rear axles		
	Parking brake /Emergency brake type	Spring applied hydraulic release (SAHR) on front & rear axles.		
	Parking brake /Emergency brake control	Electro-hydraulic. Cabin switch. Fail-safe automatic application on engine shut-down.		
	Tyres dimensions	16/70-24		
Operator test & warning	Warning: low brake pressure, residual service, brake pressure, loss of driver presence.			
PERFORMANCE	Max. travel speed	35 km/h		
	Drawbar pull	76 kN		
	Gradeability	56%		
	Turning radius (end of forks)	5,010 mm		
WEIGHTS	Total unladen	8,600 kg		
	Front axle unladen (boom retracted and lowered)	4,280 kg		
	Rear axle unladen (boom retracted and lowered)	4,320 kg		

TH5.8

UNDERGROUND
PRELIMINARY

TANK AND SYSTEM CAPACITIES	Fuel tank	120 l
	AdBlue	10 l*
	Hydraulic oil tank	90 l
	Engine oil tank	9 l
	Cooling liquid	20 l
HYDRAULIC CIRCUIT FOR MOVEMENTS	Max. operating system pressure	350 bar
	Circuit type	Load sensing
	Service pump	Bondioli & Pavesi – Variable displacement
	Controls for boom	Danfoss – Electro-proportional valve
	Movements control	1 joystick Danfoss with FNR switch and dead man safety device - Management with CAN bus technology
CONTROL SYSTEMS & WARNINGS	Stability control	RCL Rated Capacity Limiter
GENERAL PROTECTIONS	Cabin	ROPS ISO:3471 - FOPS ISO: 3449 Level 1 and 2
	Body	Lights & cabin guards (on all cabin sides and under cabin roof) A/C condensor guard
	Exhaust	Catalytic Converter/Purifier: 50 PPM
ERGONOMICS, ACCESS, VISIBILITY	Work lights	LED 2000 Lux (2x boom) LED 10000 Lux (1xfront 1xrear)
	Other	Fwd/rev directional lights (mounted on all the 4 cabin sides and on the 4 frame lights). Air conditioning
	Markings, Signs, Labelling	Warning & danger, controls & pre-op, reflective hi-visibility, access & maintenance point.
ISOLATION POINTS & MISCELLANEOUS	Emergency stops	Cabin x1 - External x2
	Isolation	Dual pole battery + starter isolators Fuel isolation valve Jump start receptacle, all inside engine bay
	Miscellaneous	Loose wheel nut indicators Easy Connect System – Attachment hydraulic hoses Wheel chocks x2 Boom cylinder lock
	Extinguisher(s)	external 2x6kg powder extinguishers
STANDARD MET	EN 1459-1: concerning standards for variable-reach trucks EN 13000: concerning standards for mobile cranes FOPS/ROPS EU 2016/1628: EU regulation concerning engine emissions ANSI B56.6: concerning standards for variable-reach trucks Optional: EN 280: concerning standards for mobile elevating work platforms ANSI A92.20: concerning standards for mobile elevating work platforms	

*Only available for Stage V and Stage IV engines