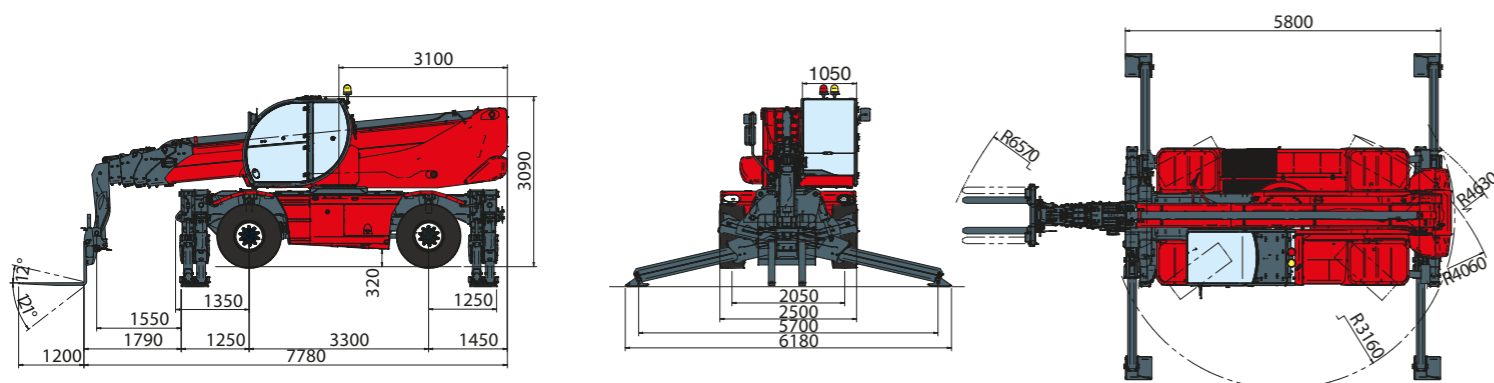


<b>MACHINE MODEL</b>	Rotating telescopic handler	RTH 6.30SH	
	Maximum lifting capacity	6.000kg (center of gravity 600 mm)	
	Maximum lifting height	29,90 m	
	Rotation	360° (continuous)	
<b>ENGINE - MERCEDES</b>	Type	Mercedes OM 934 LA Stage IV	Mercedes OM 924 LA Stage 3A
	Rated power	150 kW - 203 HP at 2.200 rpm	145 kW - 196 HP at 2.200 rpm
	Maximum torque	800 Nm at 1.200-1.600 rpm	705 Nm at 1.200-1.600 rpm
	Displacement	5,13 l	4,8 l
	Cylinders	4 in line	4 in line
	Fuel	Diesel direct injection turbocharged	Diesel direct injection turbocharged
	Cooling system	Water – intercooler	Water – intercooler
<b>TRANSMISSION</b>	Type	Hydrostatic	
	Model	Bosch – Rexroth	
	Maximum pressure	500 bar	
	Displacements	Variable displacement pump electronically controlled. Variable displacement motor.	
<b>AXLES AND BRAKES</b>	Gear box	2 speeds forward-reverse	
	Type	Axles with epicyclic reduction gear	
	Rear axle	Oscillating and steering with hydraulic locking	
	Front axle	Oscillating and steering with automatic levelling +/- 10°	
	Service brake	Hydraulically activated, oil-immersed multi-disc type on each axle	
	Parking brake	Hydraulic with negative action	
<b>PERFORMANCE</b>	Tyres dimensions	445/65 R 22,5	
	Max. travel speed	40 km/h	
	Drawbar pull	80 kN	
	Gradeability	40%	
<b>WEIGHTS</b>	Turning radius (end of forks)	6.570 mm	
	Total unladen	21.830 kg	
	Front axle unladen (boom retracted and lowered)	10.830 kg	
	Rear axle unladen (boom retracted and lowered)	11.000 kg	
<b>TANKS</b>	Fuel tank	180 l	180 l
	AdBlue	40 l	n.a.
	Hydraulic oil tank	220 l	220 l
	Engine oil tank	20,5 l	20,5 l
	Cooling liquid	36 l	36 l
<b>HYDRAULIC CIRCUIT</b>	Max. operating system pressure	350 bar	
	Circuit type	Load sensing	
	Service pump	Bosch Rexroth – Variable displacement	
	Controls for boom and turret movements	Danfoss – Electroproportional valve SIL 2	
	Controls for stabilizers	Bosch Rexroth – Electro-hydraulics controls	
	Movements control	2 joystick Danfoss with two shafts with dead man safety device - Management with CAN bus technology	
<b>CONFORMTY TO STANDARDS</b>	EN 13849: concerning the safety of all controls of the machine EN 13000: concerning the standard of hydraulic cranes EN 280: concerning the standard of aerial platforms FOPS/ROPS EU 2016/1628: concerning engine emissions standards EN 1459-2: concerning the standard of self-propelled variable reach trucks		



The data in this brochure are informative and subject to change without notice

REV07



Maximum lifting height: 29,80 m  
 Maximum reach: 26,00 m  
 Electronically controlled hydrostatic transmission  
 Automatic levelling device  
 Scissors stabilizers

tracce.com

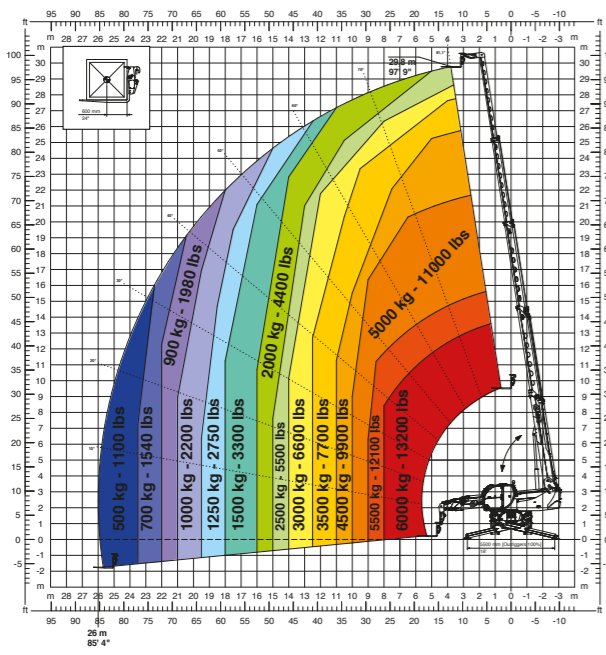
# RTH6.30SH

**Magni Telescopic Handlers srl**

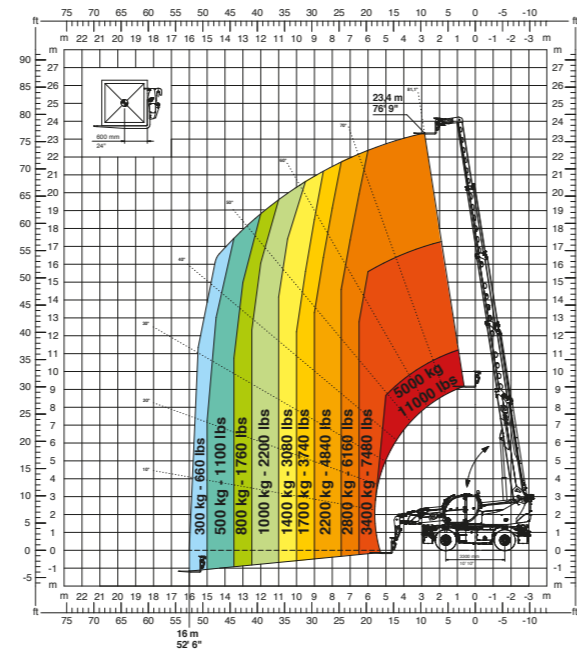
Via Magellano, 22 - 41013 Castelfranco Emilia, Modena, Italia - Tel: +39 059 8630811 - Fax: +39 059 8638012

[commerciale@magnith.com](mailto:commerciale@magnith.com) - [www.magnith.com](http://www.magnith.com)

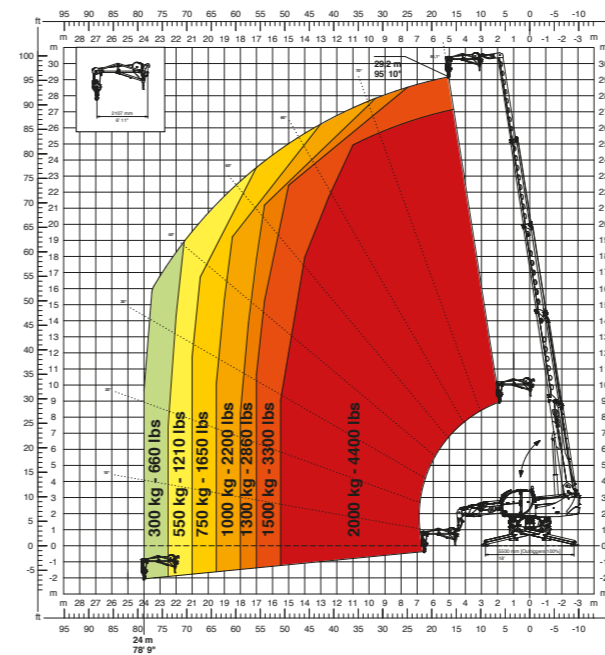
360° fully extended stabilizers load chart with forks



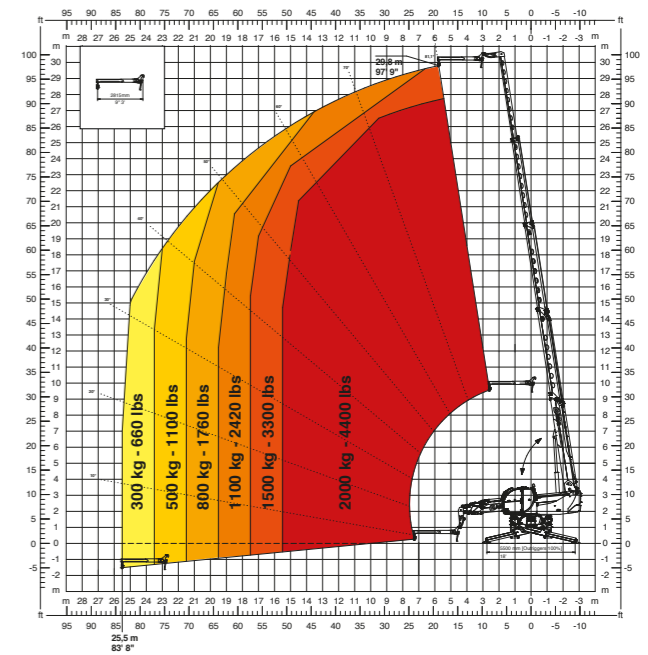
Frontal position load chart on tyres with forks



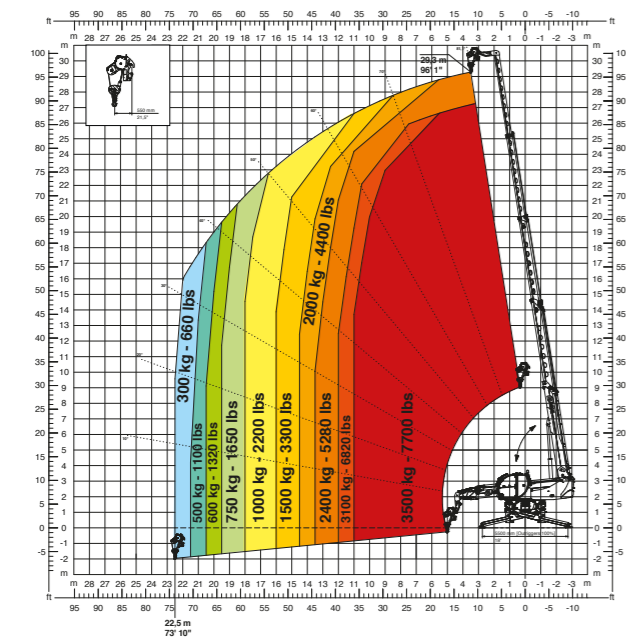
JW 2000  
Jib winch 2.000



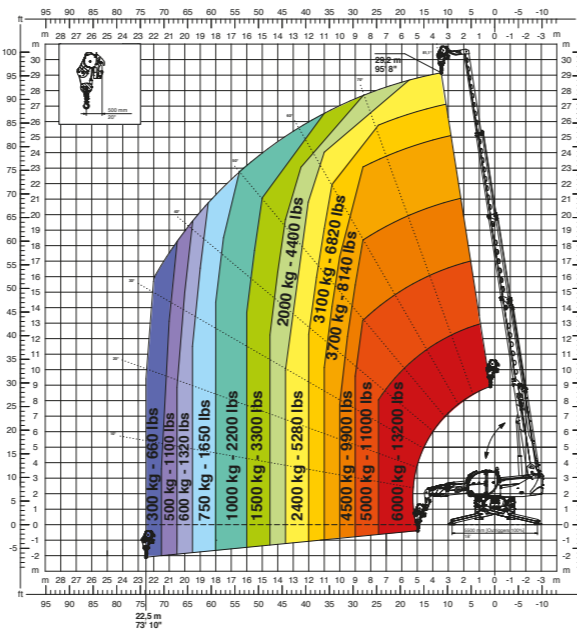
J 2000  
Jib 2.000



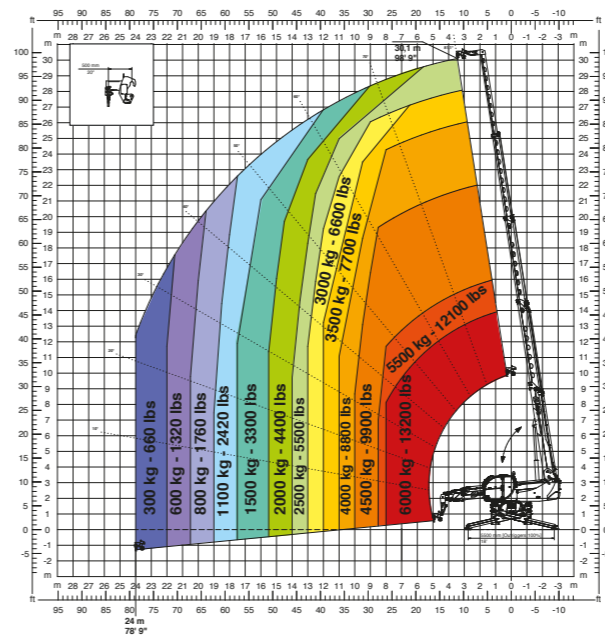
W 3,5  
winch 3,5 ton



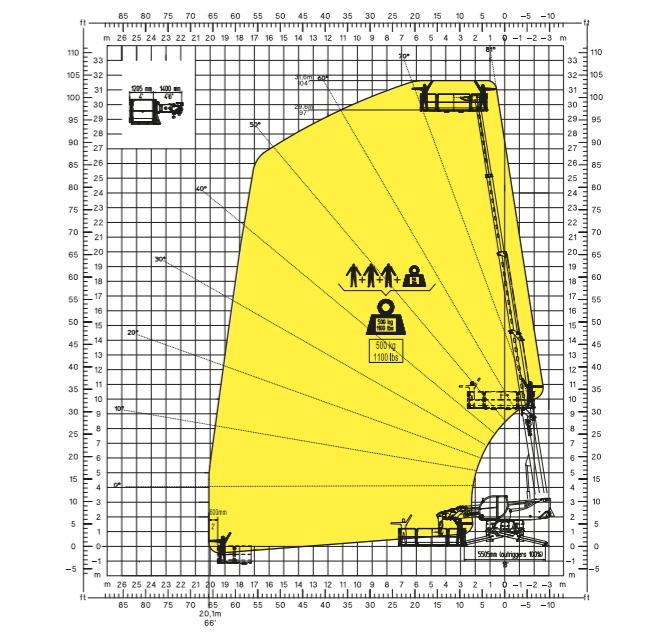
W 6  
winch 6 ton



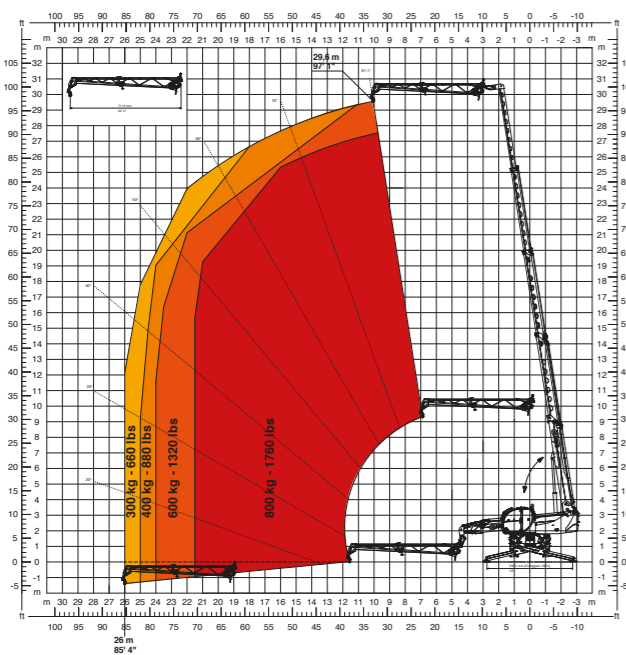
H 6  
hook 6 ton



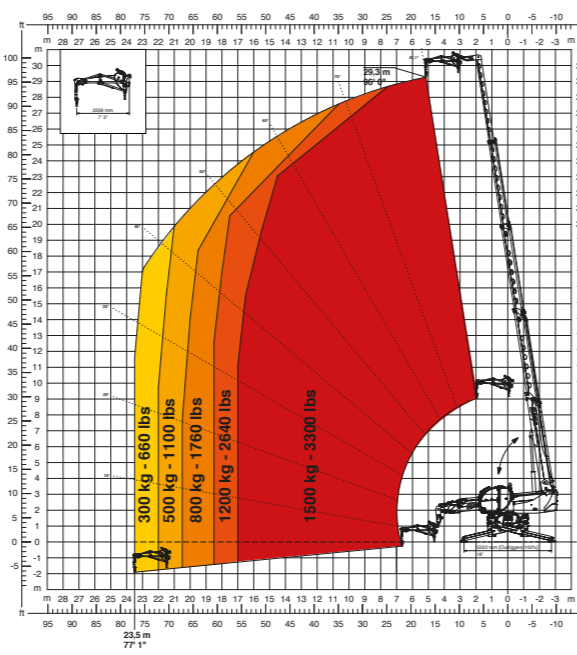
REP 2-4,5  
Rotating extendable men platform 500kg



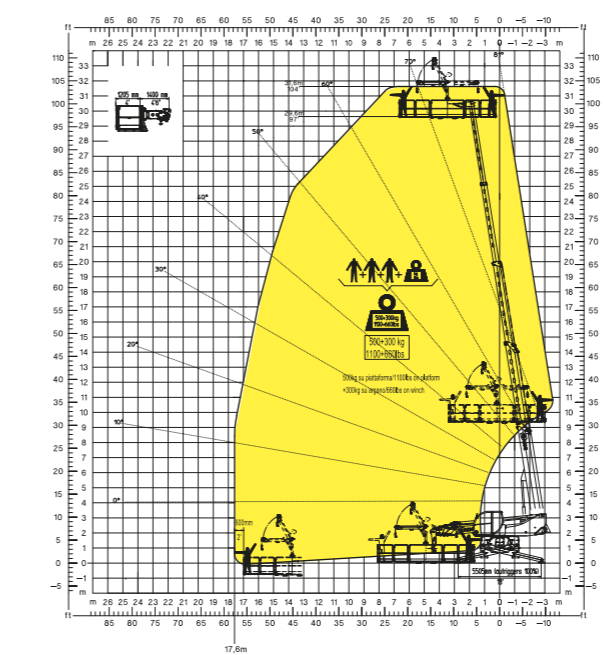
JW 800  
Jib winch 800



JW 1500  
Jib winch 1.500



REP 5,2-6,5 W0,3  
Platform 6,5m 500kg with winch 300kg



REP 10.2-4,7  
Rotating Extendable Men Platform 1000Kg

